

AI-Powered Smart Surveillance Camera System

Dr. Md. Asif¹, K. Laxmi Prasanna²

¹Asst. Prof; Department Of Electronics And Computer Engineering accredited By Nba J.B. Institute Of Engineering & Technology Hyderabad India

²B.Tech Student's; Department Of Electronics And Computer Engineering accredited By Nba J.B. Institute Of Engineering & Technology Hyderabad India

Accepted 23-04-2026

Author(s) Retains the Copyrights of This Article

Abstract

The widespread deployment of surveillance cameras in both public and private domains has intensified the need for intelligent monitoring solutions that can surpass the limitations of human-based observation. Continuous manual supervision of multiple video streams often leads to fatigue, reduced attention, and delayed reactions, increasing the likelihood of overlooked critical events. To overcome these challenges, this paper presents an AI-driven smart surveillance system that integrates real-time video processing with deep learning techniques for automated monitoring. The proposed system utilizes advanced object detection models such as YOLOv5 and YOLOv8 to achieve fast and accurate identification of humans and relevant objects within video frames. In addition, centroid-based tracking is employed to maintain consistent identification of individuals across consecutive frames. The system is capable of recognizing potentially suspicious behaviors, including unauthorized intrusion, prolonged loitering, abnormal crowd gathering, and unattended objects. Detected events are systematically recorded using a lightweight SQLite database, ensuring efficient data storage and retrieval. A web-based interface developed using Flask enables live video streaming with detection annotations and real-time event updates for users. By reducing reliance on manual monitoring and incorporating intelligent filtering mechanisms, the system minimizes false alarms while improving overall surveillance effectiveness. Furthermore, its scalable architecture and compatibility with IoT frameworks make it suitable for deployment in smart cities, industrial environments, educational campuses, and high-security zones.

Keywords

Artificial Intelligence, Smart Surveillance, Object Detection, YOLOv5, YOLOv8, Deep Learning, Video Analytics, Centroid Tracking, Activity Recognition, IoT Integration, Real-Time Monitoring

Introduction



Fig 1: Surveillance Camera

Surveillance technologies have become a fundamental component of modern security systems, ensuring protection across public spaces, workplaces, restricted zones, and high-risk environments such as airports, financial institutions, and government facilities. Despite their widespread adoption, conventional surveillance frameworks rely heavily on continuous human observation, where operators are required to monitor multiple video streams for extended periods. This approach is

inherently inefficient and susceptible to human limitations, including fatigue, reduced attention span, and delayed reaction time. As the number of deployed cameras continues to grow, maintaining effective manual monitoring becomes increasingly impractical, often resulting in overlooked incidents and compromised response efficiency. These limitations highlight the urgent need for more intelligent and autonomous surveillance solutions. To address these challenges, this work

K. Laxmi Prasanna *et. al.*, / *International Journal of Engineering & Science Research*

proposes an AI-powered smart surveillance system designed to transition from passive video recording to active, real-time monitoring and analysis. The system processes live video feeds to automatically detect and interpret the presence of individuals, objects, and activities of interest. By leveraging advanced analytics, it can identify potentially suspicious behaviors such as unauthorized entry, prolonged loitering, tailgating, sudden abnormal motion, and unattended objects. Continuous analysis of visual data enhances situational awareness and supports faster, more informed decision-making by security personnel. This automation significantly reduces reliance on manual supervision while improving overall operational efficiency. The proposed system integrates several advanced technologies to achieve high performance and reliability. It employs state-of-the-art deep learning-based object detection models, such as YOLOv5 and YOLOv8, for rapid and accurate identification of entities within video frames. Activity recognition is facilitated through convolutional neural network (CNN) architectures, enabling the system to classify behavioral patterns effectively. Additionally, face recognition techniques are incorporated to distinguish between authorized and unauthorized individuals. The implementation utilizes widely adopted frameworks, including TensorFlow, PyTorch, and OpenCV, to process real-time video streams with high precision. For robust multi-object tracking, the DeepSORT algorithm is applied to maintain consistent identity assignment across frames, even in crowded or dynamic environments. Together, these components form a cohesive and intelligent surveillance framework that surpasses traditional human monitoring in both speed and accuracy. A critical drawback of conventional surveillance systems is the high incidence of false alarms, often triggered by irrelevant motion, lighting variations, or benign activities. The proposed system mitigates this issue through intelligent filtering mechanisms supported by machine learning techniques. By training on diverse datasets and employing strategies such as transfer learning and data augmentation, the system improves its ability to differentiate between normal and anomalous behavior. As a result, alerts are generated only for events of genuine concern, allowing security personnel to focus on meaningful threats rather than unnecessary distractions. This targeted alerting mechanism enhances overall system efficiency and reduces the need for extensive human intervention. Furthermore, the system is designed with scalability and interoperability in mind. It can be deployed on edge computing devices, such as NVIDIA Jetson platforms, or integrated into cloud-based infrastructures depending on resource availability and application requirements. The architecture also supports integration with Internet of Things (IoT) components, including motion

sensors, access control systems, and alarm devices, enabling automated responses such as door locking, real-time notifications, and remote surveillance through web-based dashboards. The solution is applicable across a wide range of domains, including smart cities, industrial facilities, educational institutions, and commercial environments. In addition to technical capabilities, the system considers ethical and privacy concerns associated with intelligent surveillance. Measures such as data encryption, controlled access mechanisms, and responsible use of facial recognition are incorporated to ensure compliance with data protection standards. Looking ahead, the system can be further enhanced by incorporating predictive analytics and advanced behavioral modeling techniques using recurrent neural networks (RNNs) or long short-term memory (LSTM) networks. These enhancements would enable the system to anticipate potential threats based on historical patterns, thereby shifting from reactive monitoring to proactive security management. Overall, the proposed AI-based surveillance framework represents a significant advancement toward automated, intelligent, and efficient security systems tailored for modern environments.

Literature Survey

Violence Detection in Industrial Surveillance Using Deep Learning

Recent advancements in smart surveillance systems have been significantly influenced by the integration of IoT-enabled cameras and deep learning techniques, particularly in industrial environments where safety is critical. Modern research focuses on automated violence detection systems that can analyze video streams in real time to identify hazardous or aggressive activities. A common approach involves the use of lightweight convolutional neural networks (CNNs) to initially detect human presence within video frames, thereby eliminating unnecessary processing of irrelevant data. Once individuals are identified, a sequence of frames is forwarded to a three-dimensional CNN (3D-CNN), which captures both spatial and temporal features to better understand motion patterns over time. Unlike conventional surveillance approaches that process every frame uniformly, this selective processing strategy enhances computational efficiency while maintaining high accuracy. The extracted features are typically classified using a SoftMax layer, which determines whether a sequence corresponds to violent or non-violent activity. Upon detection of suspicious behavior, the system can generate immediate alerts, enabling timely intervention. Furthermore, such models are often designed with modular architectures that support transfer learning, allowing them to adapt to different datasets and environments without extensive retraining. Experimental

evaluations conducted across multiple benchmark datasets indicate that these deep learning-based approaches outperform traditional handcrafted feature-based methods in both detection accuracy and processing speed, demonstrating their effectiveness for real-world deployment.

AI-Based Helmet Detection System for Traffic Monitoring

Ensuring helmet compliance among two-wheeler riders remains a major challenge in traffic safety management worldwide. Traditional enforcement techniques, which rely heavily on manual supervision, are often inefficient, error-prone, and difficult to scale in densely populated regions. To overcome these challenges, recent studies have proposed AI-driven helmet detection systems that utilize real-time image and video feeds from traffic cameras and aerial devices. These systems commonly employ advanced object detection frameworks derived from the YOLO (You Only Look Once) architecture. Enhanced models, such as Hybrid Attention YOLO (HAYOLO), incorporate attention mechanisms and adaptive feature fusion strategies to improve detection performance under complex conditions, including poor lighting, occlusions, and variations in helmet design. By focusing on relevant regions within an image and refining feature representation, these models achieve higher accuracy compared to standard detection methods. The automated identification of helmet violations enables real-time alerting and supports law enforcement agencies in improving compliance and reducing accident risks. Overall, such intelligent

systems provide a scalable and efficient solution for modern traffic monitoring applications.

Proposed System and Methodology

Problem Statement

Conventional surveillance systems are predominantly dependent on continuous human observation, making them vulnerable to several limitations such as operator fatigue, reduced concentration, delayed response, and human error. With the rapid expansion in the number of CCTV installations across public and private environments, it becomes increasingly difficult for security personnel to monitor all video feeds simultaneously. These systems primarily function as passive recording tools, lacking the ability to interpret or analyze activities in real time. Consequently, critical incidents such as unauthorized access, theft, violent behavior, or suspicious activities may remain undetected until after they occur, reducing the effectiveness of security measures. To address these shortcomings, there is a growing need for an intelligent surveillance framework capable of automated video analysis. By incorporating artificial intelligence and deep learning models, such as YOLOv5 for object detection and facial recognition techniques for identity verification, the system can actively monitor environments, detect anomalies, and generate real-time alerts. This transition from passive monitoring to proactive analysis enhances situational awareness, reduces reliance on human operators, and enables faster and more accurate decision-making in security-critical scenarios.

Proposed System

AI-Powered Smart Surveillance Camera System

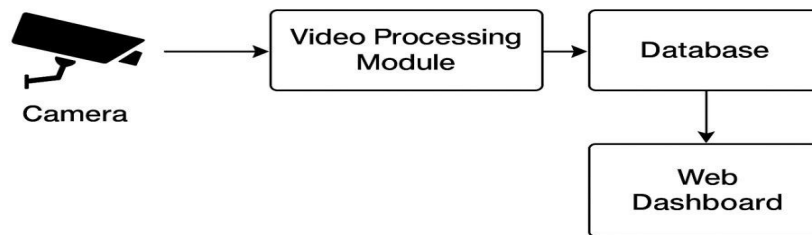


Fig 2; Proposed system

The proposed system introduces an AI-driven surveillance framework that transforms traditional monitoring into an automated and intelligent process. Instead of relying on human supervision, the system processes live video streams using deep learning algorithms to detect and track individuals and objects in real time. Models such as YOLOv5 are utilized for efficient object detection, while face recognition modules are incorporated to verify identities and differentiate between authorized and unauthorized individuals. The system is designed to

recognize various suspicious activities, including intrusion, loitering, unauthorized access, violent interactions, and unattended objects. Upon detecting such events, it generates immediate alerts to notify security personnel, enabling prompt response and mitigation. By integrating real-time analytics with automated alert mechanisms, the system significantly reduces human error and improves overall surveillance efficiency. Additionally, the architecture supports integration with cloud storage and databases to maintain event logs, which can be

used for future analysis and decision-making. This makes the system suitable for deployment across diverse environments such as airports, banks, offices, industrial facilities, and other high-security areas.

Methodology

Data Acquisition

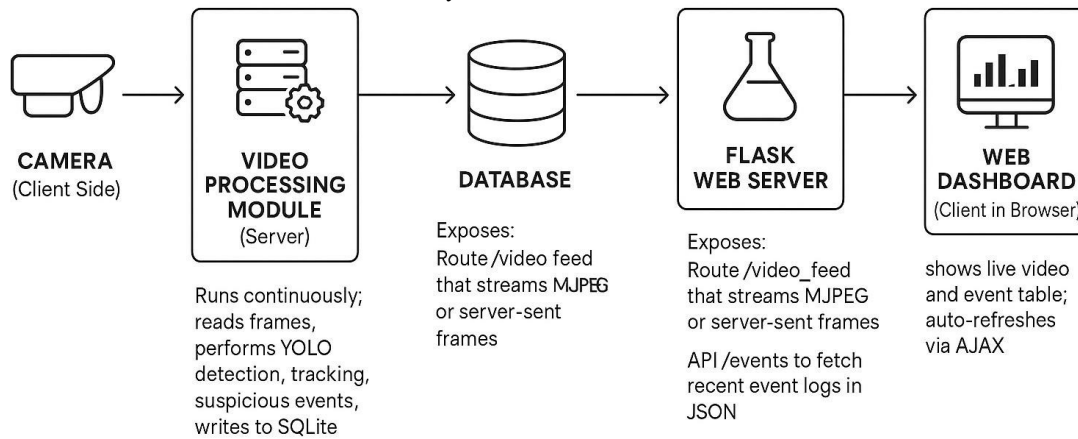
The initial stage of the system involves capturing live video streams through surveillance cameras using computer vision libraries such as OpenCV. These video streams are converted into individual frames, which serve as the primary input for subsequent processing stages. Ensuring stable frame extraction, appropriate resolution, and minimal distortion is essential, as the overall system

performance heavily depends on the quality of the input data.

Preprocessing

Before feeding the captured frames into the detection models, preprocessing techniques are applied to enhance data quality and ensure compatibility with model requirements. This stage includes operations such as resizing frames to a standardized resolution, normalizing pixel values, reducing noise, and adjusting color properties. These steps not only improve the clarity of visual data but also optimize computational efficiency, enabling faster and more accurate real-time detection.

System Design



System Architecture

The system design outlines the structural and functional organization of the AI-based smart surveillance framework, describing how hardware components, software modules, and data-processing pipelines interact to achieve real-time intelligent monitoring. The design adopts a modular and scalable approach to ensure efficient performance under dynamic conditions while allowing future extensibility. By separating responsibilities across different layers, the system maintains clarity, flexibility, and ease of integration. The architecture follows a client-server model, where the client layer is responsible for video acquisition and the server layer performs processing and analysis. The camera module acts as the primary data source, continuously capturing live video streams using either a webcam or an IP-based camera. Maintaining consistent frame rates and image quality is essential, as the accuracy of detection and tracking depends directly on the quality of the input data. At the core of the system lies the video processing and intelligence module, which handles frame acquisition, preprocessing, object detection, tracking, and activity recognition. Incoming frames are first standardized through preprocessing operations such as resizing and noise reduction. A pre-trained YOLO model is then applied to detect objects and generate bounding

boxes along with confidence scores. To maintain continuity across frames, tracking algorithms assign unique identifiers to detected objects and monitor their movement trajectories. Based on these temporal patterns, the system identifies suspicious behaviors such as intrusion, loitering, and prolonged presence within restricted zones. This layered processing enables efficient real-time operation while minimizing computational overhead. The application layer is implemented using a Flask-based web server that serves as the communication bridge between backend processing and user interaction. It provides endpoints for streaming annotated video, retrieving event data, and rendering the main dashboard interface. The presentation layer consists of a web-based dashboard designed for accessibility and ease of use. It allows users to monitor live video feeds with detection overlays, view object details, and access event logs without requiring additional software installation. Asynchronous communication techniques ensure smooth updates and responsiveness. The interaction between components follows a continuous workflow. Video streams captured by the camera are forwarded to the processing module, where object detection and classification are performed. Detected events are analyzed and stored in a database, and

K. Laxmi Prasanna *et. al.*, / *International Journal of Engineering & Science Research*

both processed video and event updates are transmitted to the dashboard in real time. This integrated design ensures seamless communication and efficient system operation.

System Implementation

The implementation phase focuses on converting the conceptual design into a functional surveillance system capable of real-time operation. This stage includes environment setup, module development, backend integration, and deployment of the monitoring interface. The system is developed using widely adopted tools and frameworks to ensure reliability, maintainability, and scalability. The development environment is configured using Python as the primary programming language, supported by libraries such as OpenCV for video processing, YOLO for object detection, Flask for backend services, and SQLite for data storage. The system is implemented on a standard workstation equipped with sufficient processing capabilities to handle real-time inference, with optional GPU acceleration to enhance performance in demanding scenarios. This configuration enables efficient frame capture, processing, and visualization. A modular implementation strategy is adopted to ensure flexibility and ease of maintenance. The video acquisition module manages continuous frame capture from the camera and ensures stable data flow into the processing pipeline. The object detection module applies the YOLO model to identify objects and assign labels and bounding boxes in real time. An activity monitoring module interprets detection outputs to identify suspicious behaviors using predefined rules and temporal analysis. Detected events are then passed to the logging module, where relevant details such as timestamps and event types are stored in a structured SQLite database. The backend integration is handled using Flask, which provides endpoints for streaming processed video and accessing event data. The dashboard interface displays real-time video along with detected events, offering users a clear and interactive monitoring experience. The system workflow operates in a continuous loop, where video frames are captured, analyzed, and displayed while events are logged simultaneously. This ensures minimal latency and high responsiveness. Additional implementation considerations include optimization techniques such as efficient memory management, persistent model loading, and secure access to backend services. The system is tested under varying environmental conditions to ensure robustness and reliability. These measures collectively enhance the system's ability to perform consistently in real-world scenarios.

System Testing

System testing is conducted to evaluate the performance, reliability, and accuracy of the AI-powered surveillance system under real-time

conditions. The testing process verifies the correct functioning of all major components, including video capture, object detection, activity recognition, event logging, and dashboard interaction. Both functional and non-functional testing approaches are applied to ensure comprehensive validation. The primary objective of testing is to confirm that the system operates as intended across all stages of the workflow. This includes validating continuous video streaming, accurate object detection, effective tracking, and reliable identification of suspicious activities such as intrusion, loitering, crowd formation, and unattended objects. Additionally, the testing process evaluates the efficiency of event logging and the responsiveness of the dashboard interface. Functional testing demonstrates that the system consistently captures live video streams and performs real-time object detection with stable accuracy. Intrusion detection is successfully triggered when individuals enter predefined regions of interest, while loitering detection accurately identifies prolonged presence within restricted areas. Similarly, crowd detection is activated when the number of individuals exceeds a defined threshold, and unattended object detection functions correctly by identifying objects left without nearby human presence. All detected events are reliably stored in the database and displayed on the dashboard without delay. The dashboard functionality is verified to ensure seamless video streaming and real-time event updates. The interface provides continuous visualization of processed video along with dynamically updated event logs, allowing users to monitor activities efficiently. The system demonstrates stable performance during prolonged operation, maintaining consistent frame rates and detection accuracy without crashes or interruptions. Non-functional testing further evaluates system performance, usability, reliability, and scalability. Performance testing confirms that the system operates at acceptable frame rates under real-time conditions, even with limited computational resources. Reliability testing indicates stable operation over extended durations, while usability testing highlights the effectiveness of the dashboard interface in providing clear and accessible information. Scalability testing shows that the system can handle higher resolutions and increased workloads with minimal performance degradation. Overall, the testing results validate that the proposed surveillance system meets the required standards of accuracy, stability, and efficiency. The integration of real-time detection, intelligent analysis, and responsive visualization ensures that the system is well-suited for deployment in practical surveillance scenarios, particularly in small- to medium-scale environments.

Results



Fig 1 Object Detection

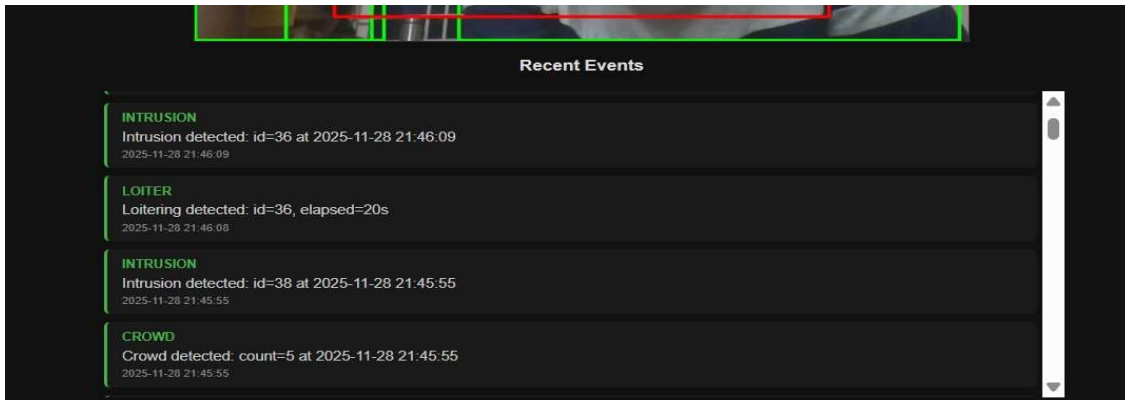


Fig 2 Intrusion and Crowd

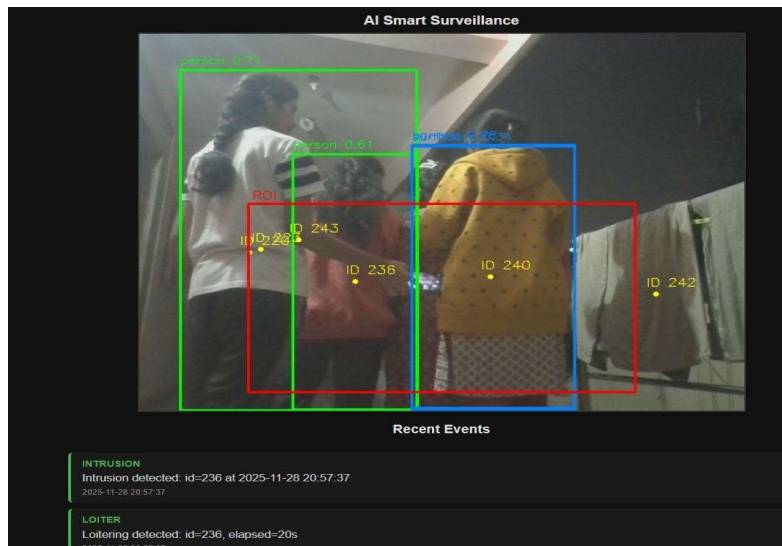


Fig 7. 3 Loitering Detection

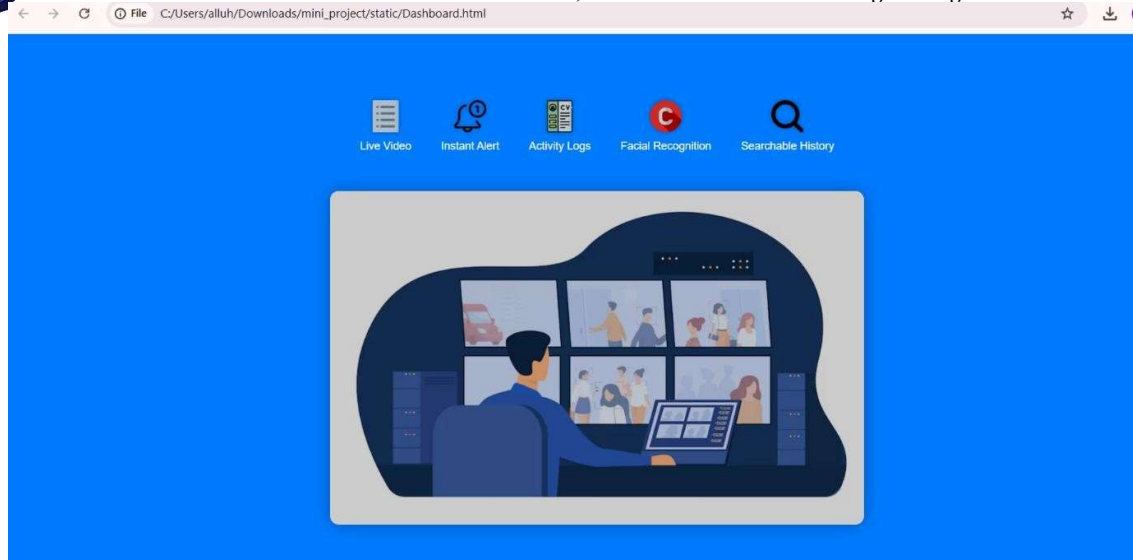


Fig 7. 4 User Interface

The proposed AI-driven smart surveillance system demonstrates effective real-time monitoring by integrating deep learning-based object detection, centroid-based tracking, and a web-based visualization interface. The system successfully processes live video streams and performs intelligent analysis with minimal latency, achieving an average frame rate of approximately 20 to 30 frames per second depending on the underlying hardware configuration. This performance indicates that the system is capable of operating efficiently even on standard computing resources. The implementation of the YOLOv8 model enables accurate detection of humans and commonly encountered objects across varying environmental conditions, including differences in illumination and background complexity. The system reliably identifies individuals entering predefined regions of interest, thereby supporting intrusion detection with precise time-stamped event logging. Similarly, the crowd detection mechanism functions effectively by generating alerts when the number of detected individuals exceeds a specified threshold, making it suitable for monitoring public or restricted spaces. The integration of centroid-based tracking allows the system to monitor the movement and duration of individuals within a defined area, enabling accurate identification of loitering behavior when presence exceeds a predefined time limit. In addition, the system is capable of detecting unattended objects by analyzing stationary non-human entities that remain within the scene for extended durations without nearby human interaction. All detected events are recorded and displayed through a real-time dashboard, ensuring that users have immediate access to critical information. The backend system, implemented using a Flask framework, operates reliably and

delivers continuous video streaming alongside dynamic event updates. The user interface provides a clear and responsive visualization of both annotated video feeds and event logs, enhancing usability and situational awareness. The combination of efficient detection models and intelligent filtering mechanisms reduces the occurrence of false positives, thereby improving the reliability of the system. Despite its effectiveness, certain limitations were observed during testing. Detection performance may degrade in scenarios involving heavy occlusion, low-light conditions, rapid motion, or highly crowded environments where bounding boxes overlap significantly. While the crowd detection module performs well in open areas, it may require further refinement for confined or cluttered spaces. Similarly, the accuracy of unattended object detection depends on consistent object visibility and minimal environmental disturbance. These challenges highlight potential areas for further enhancement. Overall, the results confirm that the proposed system provides a lightweight yet robust surveillance solution capable of real-time intelligent monitoring. The integration of deep learning and computer vision techniques demonstrates the feasibility of deploying advanced surveillance functionalities without requiring high-end computational infrastructure.

Conclusion

The AI-powered smart surveillance system presented in this work successfully illustrates the application of real-time computer vision and deep learning techniques in enhancing modern security systems. By combining YOLOv8-based object detection, centroid tracking, and rule-based activity analysis, the system enables automated identification of critical events such as intrusion,

K. Laxmi Prasanna *et. al.*, /International Journal of Engineering & Science Research

loitering, crowd formation, and unattended objects. The system achieves reliable performance in terms of detection accuracy, processing speed, and system stability, while also providing an intuitive web-based interface for monitoring and analysis. One of the key contributions of this work is demonstrating that advanced surveillance capabilities can be implemented effectively on modest hardware configurations without the need for dedicated GPU resources. This makes the solution both cost-effective and scalable for practical deployment. In summary, the project meets its intended objectives and establishes a strong foundation for the development of intelligent, automated surveillance systems capable of supporting real-world security applications.

Future Scope

Although the current system demonstrates strong performance, several opportunities exist for further improvement and expansion. One potential enhancement is the integration of multi-camera support, which would enable centralized monitoring of large-scale environments and facilitate seamless tracking of individuals across different viewpoints. Incorporating cloud-based infrastructure could further improve scalability by enabling remote access, high-performance processing, and centralized data storage. The system can also be extended to support more advanced behavioral analysis by incorporating sequence-based deep learning models such as recurrent neural networks (RNNs) or long short-term memory (LSTM) networks. This would allow the detection of complex human activities, including violent actions, abnormal motion patterns, or predictive threat analysis. Additionally, integrating facial recognition capabilities could enable identity verification, access control, and blacklist detection, thereby enhancing security in sensitive environments. Future

developments may also include the integration of Internet of Things (IoT) devices and edge computing platforms, allowing the system to interact with smart sensors, automated locks, and alarm systems for real-time response. Deployment on edge devices such as NVIDIA Jetson or Raspberry Pi would further reduce latency and dependency on centralized servers. Overall, these advancements would transform the system into a comprehensive, intelligent surveillance platform capable of proactive threat detection and large-scale deployment.

References

1. H. Khan, X. Yuan, L. Qingge, and K. Roy, "Violence Detection from Industrial Surveillance Videos Using Deep Learning," *IEEE Access*, 2025. DOI: 10.1109/ACCESS.2025.3531213
2. A. A. Ahmed and M. Echi, "Hawk-Eye: An AI-Powered Threat Detector for Intelligent Surveillance Cameras," *IEEE Access*, 2021. DOI: 10.1109/ACCESS.2021.3074319
3. V. Koreddi, L. B. R. Mylavaram, A. N. Santhoshini, et al., "AI-Powered Smart Helmet Detection System for Traffic Safety," *ICSCSA*, 2025. DOI: 10.1109/ICSCSA66339.2025.11171366
4. U. V. Naval Gund and P. K., "Crime Intention Detection System Using Deep Learning," *ICCSDET*, 2018. DOI: 10.1109/ICCSDET.2018.8821168
5. Y. Zhou, L. Liu, L. Shao, and M. Mellor, "Fast Automatic Vehicle Annotation for Urban Traffic Surveillance," *IEEE Transactions on Intelligent Transportation Systems*, 2017. DOI: 10.1109/TITS.2017.2740303