

INCOME AND EXPENDIATURE OF DAILY WAGE LABOURS

Srinivas K, M.Sc.(maths)^{*1}, Anand reddy P, M.Sc(stat)^{*2}, and Mayuri k, M.Sc BED^{*3}

^{*1}HOD in Mathematics, Siva Sivani Degree college, Kompally, Sec'Bad-100

^{*2} HOD in in statistics, Siva Sivani Degree college, Kompally, Sec'Bad-100

^{*3}Lecturer in statistics, Siva Sivani Degree college, Kompally, Sec'Bad-100

Abstract: This study delves into the dynamics of income and expenditure patterns among daily wage laborers. Daily wage laborers constitute a crucial segment of the workforce, often characterized by financial volatility and economic vulnerability. The research aims to comprehensively analyze the income sources, financial challenges, and expenditure trends within this demographic. By investigating the intricacies of income generation and how it aligns with daily expenditures, the study provides valuable insights into the economic realities faced by daily wage laborers. The findings contribute to a better understanding of the financial landscape of this workforce, enabling policymakers and stakeholders to formulate targeted interventions and support mechanisms for improved economic well-being.

Introduction:

The **Minimum Wages Act 1948** is an Act of Parliament concerning Indian labour law that sets the minimum wages that must be paid to skilled and unskilled labors. The Indian Constitution has defined a 'living wage' that is the level of income for a worker which will ensure a basic standard of living including good health, dignity, comfort, education and provide for any contingency. However, to keep in mind an industry's capacity to pay the constitution has defined a 'fair wage'.^[1] Fair wage is that level of wage that not just maintains a level of employment, but seeks to increase it keeping in perspective the industry's capacity to pay. To achieve this in its first session during November 1948, the Central Advisory Council appointed a Tripartite Committee of Fair Wage. This committee came up with the concept of Minimum Wages. A minimum wage is such a wage that it not only guarantees bare subsistence and preserves efficiency but also provides for education, medical requirements and some level of comfort.^[1] India introduced the Minimum Wages Act in 1948,^[2] giving both the Central government and State government jurisdiction in fixing wages. The act is legally non-binding, but statutory. Payment of wages below the minimum wage rate amounts to forced labour. Wage Boards are set up to review the industry's capacity to pay and fix minimum wages such that they at least cover a family of four's requirements of calories, shelter, clothing, education, medical assistance, and entertainment. Under the law, wage rates in scheduled employments differ across states, sectors, skills, regions and occupations owing to difference in costs of living, regional industries' capacity to pay, consumption patterns, etc. Hence, there is no single uniform minimum wage rate across the country and the structure has become overly complex. The highest minimum wage rate as updated in 2012 is Rs. 322/day in Andaman and Nicobar^[3] to Rs. 38/day^[4] in Tripura.

Objective:

The primary objective of this research is to investigate and analyze the income and expenditure patterns of daily wage laborers. By examining the sources of income, financial challenges encountered, and the allocation of funds for daily expenditures, the study aims to paint a comprehensive picture of the economic realities faced by this demographic. Furthermore, the research seeks to identify key factors influencing income and expenditure variations, providing valuable insights for policymakers, researchers, and organizations involved in labor welfare and economic development.

Methods:

The study employs a mixed-methods approach, combining surveys and interviews to gather quantitative and qualitative data. A sample of daily wage laborers across diverse sectors and geographical locations will be selected to ensure a representative overview. The survey will capture details on income sources, the frequency of work, challenges faced, and typical daily expenditures. Additionally, in-depth interviews will be conducted to gain a nuanced understanding of the personal experiences and financial decision-making processes of the daily wage laborers.

Significance:

This research holds significance in shedding light on the intricate relationship between income and expenditure among daily wage laborers. The findings are anticipated to contribute to the existing body of knowledge on labor economics and provide actionable insights for policymakers, non-governmental organizations, and other stakeholders. Ultimately, the research aspires to inform targeted interventions and support mechanisms that can enhance the economic well-being of daily wage laborers.

Analysis:

dailywagesoftheentirefamily * theamountofmoneyspentonhealthcareperyearCrosstabulation

Count

		theamountofmoneyspentonhealthcareperyear				Total
		500below	500-1500	1500-2500	2500above	
Dailywagesoftheentirefamily	100 below	0	2	3	1	6
	100 to 300	6	19	10	7	42
	300 to 500	5	10	16	7	38
	500 above	3	25	24	22	74
Total		14	56	53	37	160

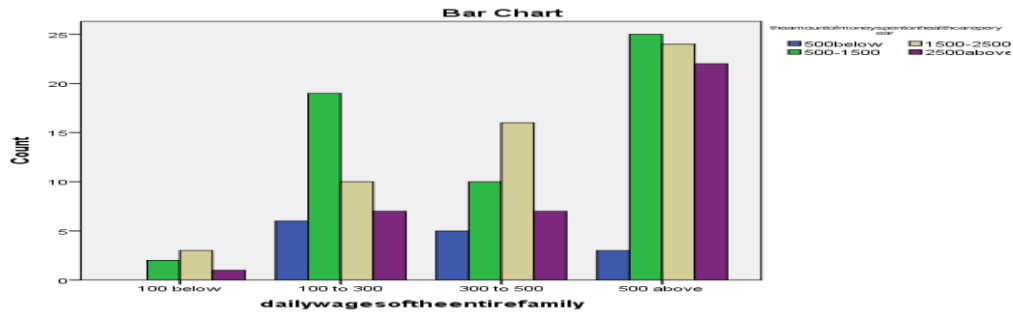


Fig. 1

dailywagesoftheentirefamily * theamountofmoneyspentonclothingperyearCrosstabulation

Count

		Theamountofmoneyspentonclothingperyear				Total
		1000 below	1000-2000	2000-3000	3000above	
dailywagesoftheentirefamily	100 below	1	2	3	0	6
	100 to 300	9	14	9	10	42
	300 to 500	3	18	5	12	38
	500 above	1	18	22	33	74
Total		14	52	39	55	160

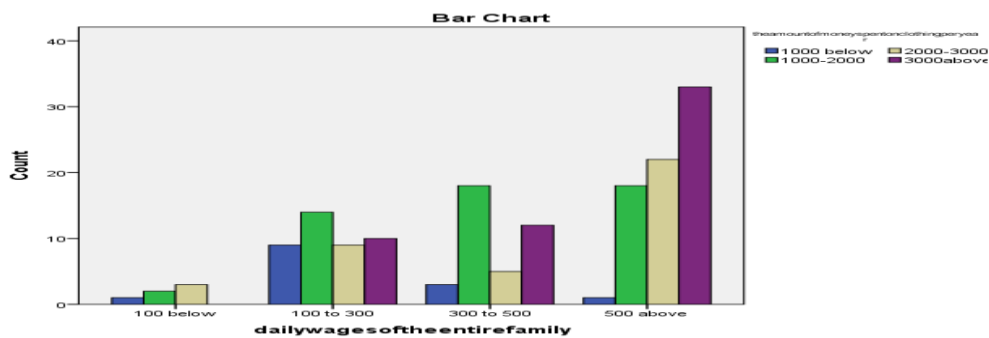


Fig.2

dailywagesoftheentirefamily * howmuchmoneydoyouspendonfoodpermonthCrosstabulation

Count

		howmuchmoneydoyouspendonfoodpermonth				Total
		1000below	1000-2000	2000-3000	3000 above	
dailywagesoftheentirefamily	100 below	1	4	0	1	6
	100 to 300	7	23	9	3	42
	300 to 500	3	16	12	7	38
	500 above	2	16	36	20	74
Total		13	59	57	31	160

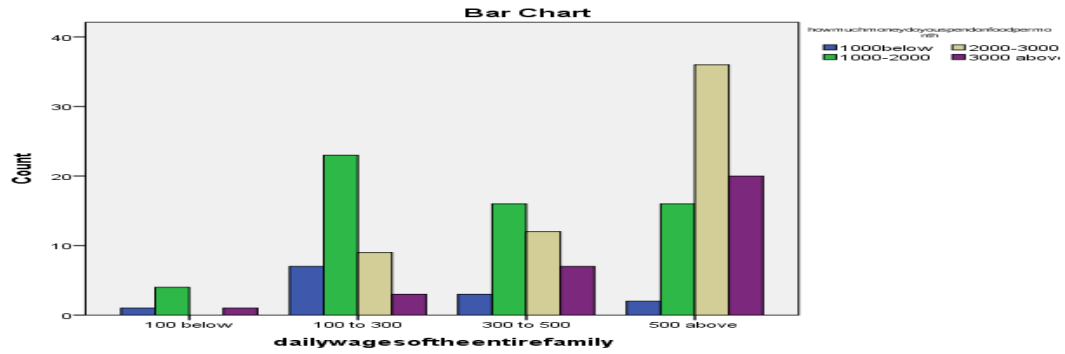


Fig. 3

dailywagesoftheentirefamily * theamountofmoneyspentonthedishbillpermonthCrosstabulation

Count		theamountofmoneyspentonthedishbillpermonth				Total
		no connection	100below	100-200	200above	
dailywagesoftheentirefamily	100 below	1	1	3	1	6
	100 to 300	5	13	22	2	42
	300 to 500	4	15	16	3	38
	500 above	3	12	46	13	74
Total		13	41	87	19	160

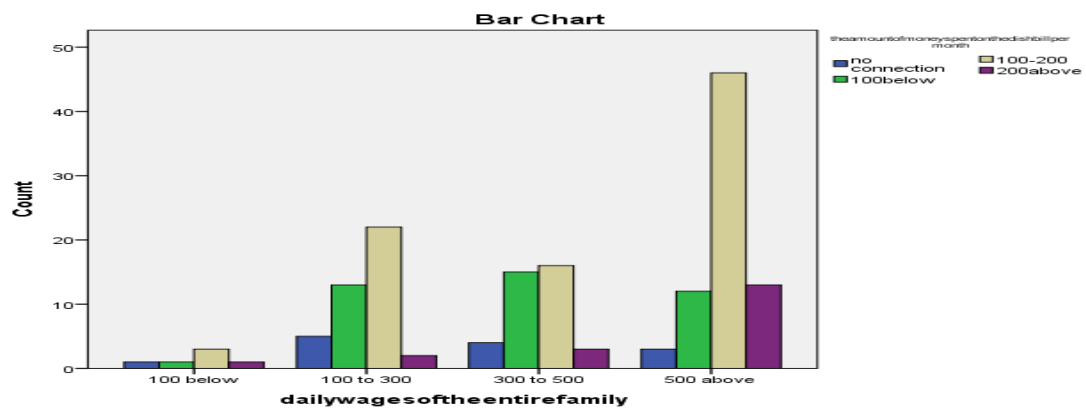


Fig.4

dailywagesoftheentirefamily * theexpendituretowardentertainmentpermonthCrosstabulation

Count		theexpendituretowardentertainmentpermonth				Total
		100below	100-300	300-500	500above	
dailywagesoftheentirefamily	100 below	1	3	1	1	6
	100 to 300	10	19	9	4	42
	300 to 500	6	13	12	7	38
	500 above	3	30	31	10	74
Total		20	65	53	22	160

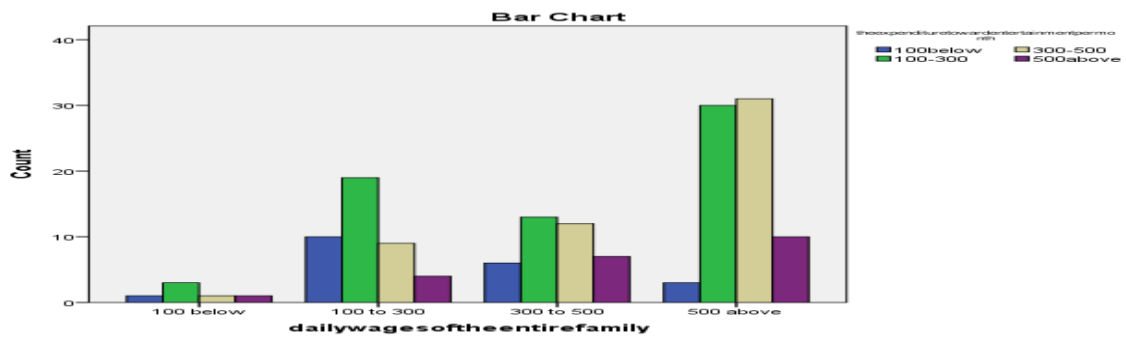


Fig. 5

dailywagesoftheentirefamily * theamounttheyspentontravellingpermonthCrosstabulation

Count		theamounttheyspentontravellingpermonth				Total
		100below	100-300	300-500	500above	
dailywagesoftheentirefamily	100 below	0	3	1	2	6
	100 to 300	7	20	13	2	42
	300 to 500	6	23	6	3	38
	500 above	8	32	24	10	74
Total		21	78	44	17	160

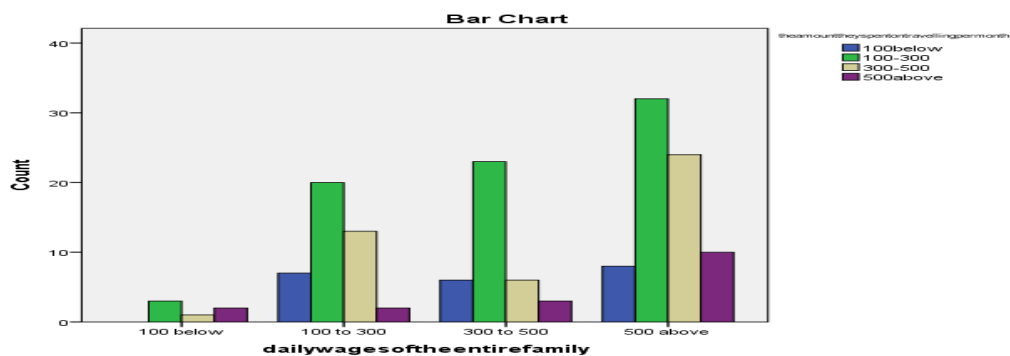


Fig. 6

dailywagesoftheentirefamily * doyouhavemicrofinanceloansCrosstabulation

Count		doyouhavemicrofinanceloans		Total
		yes	no	
dailywagesoftheentirefamily	100 below	0	6	6
	100 to 300	5	37	42
	300 to 500	4	34	38
	500 above	16	58	74
Total		25	135	160

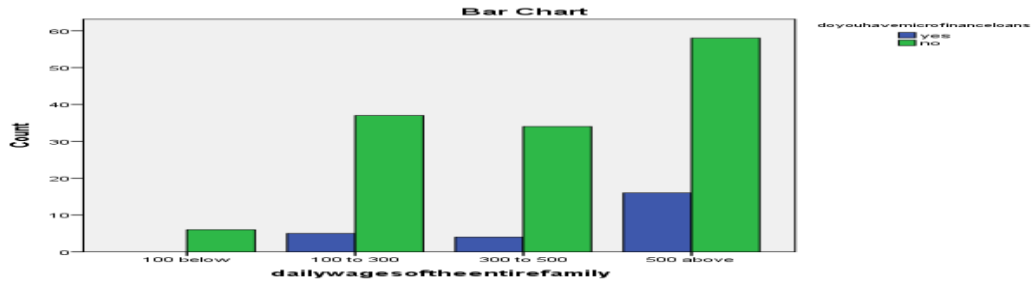


Fig. 7

dailywagesoftheentirefamily * areyouamemberofselfhelpgroupCrosstabulation

Count		areyouamemberofselfhelpgroup		Total
		yes	no	
dailywagesoftheentirefamily	100 below	1	5	6
	100 to 300	1	41	42
	300 to 500	0	38	38
	500 above	9	65	74
Total		11	149	160

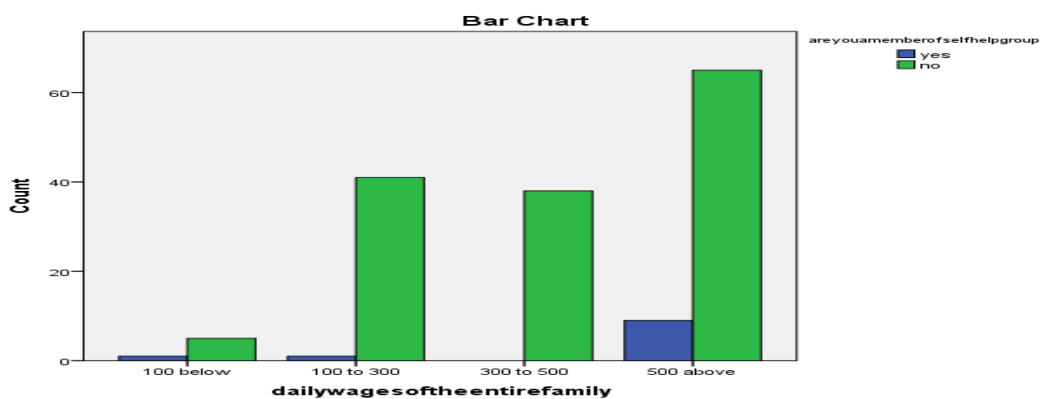


Fig. 8

Conclusion:

In a study involving 160 families, various aspects of household expenditure were examined to gain insights into their financial patterns and priorities. For health care, it was observed that 14 families spent below 500 units, while 37 families allocated sums above 2500. Similarly, in clothing expenses, 14 families spent below 1000, contrasting with 55 families spending beyond 2500. In terms of monthly food expenditure, 13 families spent below 1000, whereas 31 families surpassed 3000. The presence of television connections was investigated, revealing that 13 families lacked such connections, while 19 families spent over 200 per month on cable connections. Entertainment and traveling expenses were also scrutinized, with 20 families spending

below 100 and 22 families spending above 500 on entertainment, while 21 families spent below 100 and 17 families spent above 500 on traveling. Moreover, 25 families had microfinance loans, and 135 families did not. Additionally, 149 families did not have a self-help group, while 11 families were affiliated with one. This comprehensive exploration of household expenditures among 160 families provides valuable insights into their financial behaviors and priorities.

References:

1. Abraham, V. 2007. "Growth and inequality of wages in India: Recent trends and patterns", in Indian Journal of Labour Economics, Vol. 50, No. 4, pp. 927–941.
2. 2010. The effect of information technology on wage inequality: Evidence from Indian manufacturing sector, CDS working papers, No. 437 (Trivandrum, Centre for Development Studies).
3. Sasikumar, S.K. 2017. Declining wage share in India's organized manufacturing sector: Trends, patterns and Determinants, ILO Asia-Pacific Working Paper Series (ILO-DWT for South Asia and Country Office for India, International Labour Organization).
4. Agarwala, R.N. 2013. Informal labour, formal politics, and dignified discontent in India (New York, Cambridge University Press).
5. Anant, T.C.A.; Sundaram, K. 1998. "Wage policy in India: A review", in The Indian Journal of Labour Economics, Vol. 41, No. 4, pp. 815–834.
6. Azam, M. 2012. Changes in wage structure in urban India, 1983–2004: A quantile regression decomposition (Washington, DC and Bonn, World Bank and Institute for the Study of Labor).
7. Badigannavar, V.; Kelly, J. 2012. "Do labour laws protect labour in India? Union experiences of workplace employment regulations in Maharashtra, India", in Industrial Law Journal, Vol. 41, No. 4, pp. 439–470.
8. Banaji, J. 2000. India: Workers' rights in a new economic order, Working Paper No. 55 (Oxford, Queen Elizabeth House, University of Oxford).
9. Bank for International Settlements (BIS). 2006. 76th Annual Report (Basel).
10. Besley, T.; Burgess, R. 2004. "Can labour regulation hinder economic performance? Evidence from India", in Quarterly Journal of Economics, Vol. 119, No. 1, pp. 91–134.
11. Belser, P.; Rani, U. 2010. Extending the coverage of minimum wages in India: Simulations from household data, Conditions of Work and Employment Series No. 26 (Geneva, ILO). ;
12. 2011. "Extending the coverage of minimum wages in India: Simulations from household data", in Economic and Political Weekly, Vol. 46, No. 22, pp. 47–55.